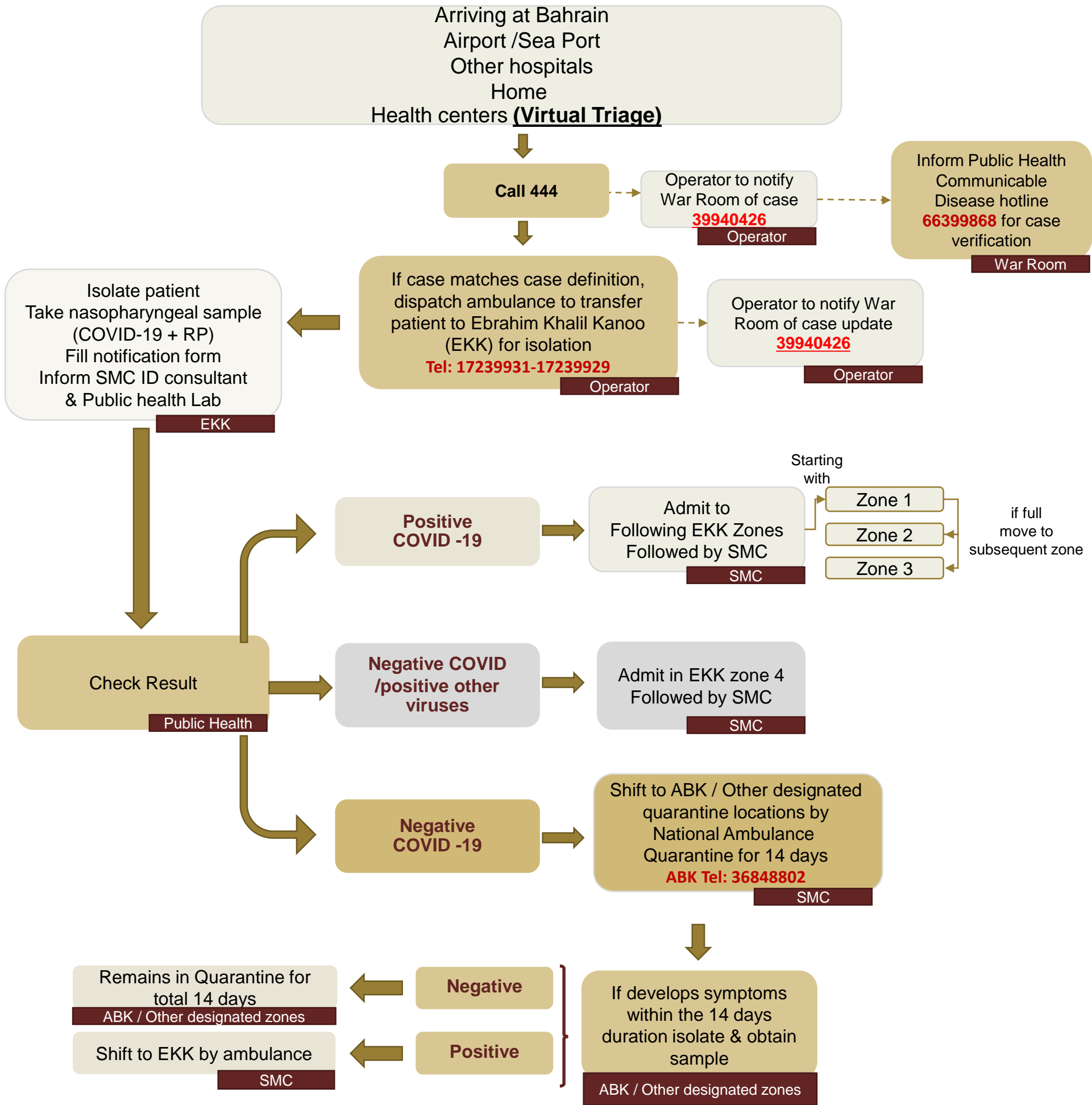


# **COVID -19 Clinical Pathways for Healthcare Providers**

---

**Suspected cases of Coronavirus Disease 2019 (COVID-19) + Symptomatic (H/O fever, cough, shortness of breath, coming from COVID-19 outbreak area)**



RP: Respiratory Panel

**EKK: 17239931-17239929**

**ABK: Reception 36848802**

**Ward: 36848955** **Ward: 36848889**

# Suspected cases of Coronavirus Disease 2019 (COVID19) + **Asymptomatic** (Coming from COVID19 outbreak area- contact with confirmed COVID19)

Arriving at Bahrain  
Airport /Sea Port  
Other hospitals  
Home  
Health centers (**Virtual Triage**)

**Call 444**

Operator informs War Room of case  
**39940426**  
Operator

Inform Public Health  
Communicable Disease hotline  
**66399868** for case verification  
War Room

**2** If individual closely interacted with a passenger from COVID-19 outbreak area that tested:

**1** **Passengers From** Hong Kong, China, Iran, South Korea, Singapore, Thailand, Malaysia

**Passenger tested positive**

Shifted to RAF automatically by ambulance  
Operator

Individuals are nasopharyngeal swabbed and wait till results are out  
Public Health

**Positive**      **Negative**

Shifted to EKK  
SMC

Remains at RAF in quarantine for 14 days  
Public Health & SMC

**Passenger tested negative**

Instruct individuals on home quarantine for 14 days self-isolation  
Public Health

Public Health call and check symptoms daily  
Public Health

**Symptomatic**      **Asymptomatic**

Shift to EKK by ambulance  
SMC

Remains in Quarantine for 14 days  
Public Health

Passengers are nasopharyngeal swabbed and wait till results are out at the airport  
Airport Clinic

**Positive**      **Negative**

Shift to EKK by ambulance  
SMC

Instruct passengers on home quarantine for 14 days self-isolation  
Public Health

Public Health check symptoms by daily call and random visit  
Public Health

**Symptomatic**      **Asymptomatic**

Shift to EKK by Ambulance  
SMC

Continue quarantine till the end of 14 days  
Public Health

**China & Hong Kong Passengers**  
Transfer patient by ambulance to ABK / other designated quarantine zones to quarantine for 14 days  
ABK / Other designated zones

*Passengers from other COVID19 outbreak areas*

Public Health check symptoms daily  
LHC Oncall MD visit  
Public Health

**Symptomatic**      **Asymptomatic**

Isolate patient in negative pressure room  
Obtain nasopharyngeal sample (COVID-19 + RP)  
**Notify 444 + War Room**  
ABK Other designated zones

Continue quarantine till the end of 14 days  
ABK / Other designated zones

**Check Result**

**Positive**

Shift to EKK by ambulance  
SMC

**Negative**

Remains in Quarantine for 14 days  
ABK Other designated zones

RP: Respiratory Panel

**EKK: 17239931-17239929**

**ABK: Reception 36848802**

**Ward: 36848955**      **Ward: 36848889**